

# InSite™ | *L. mono* Glo

Rapid Environmental  
*Listeria* Species and  
*L. mono* Test



Hygiena's InSite *L. mono* Glo detects *Listeria* species and *L. monocytogenes* from surfaces in less than 48 hours. The dual test changes color in presence of *Listeria* species, while UV light reveals the presence of *L. mono*. The all-in-one self-contained test device reduces sample cross contamination risks that are common with other testing techniques.






### Benefits:

- No complex lab equipment required
- Large pre-moistened sponge tip maximizes sample collection
- Neutralizing reagent minimizes sanitizer interference
- Selective enrichment media to maximize *Listeria* detection
- Easy-to-interpret color change
- UV fluorescence indicates pathogenic *Listeria*
- 24-hr presumptive positive results, 48-hr negative results
- Compatible with BAX® System Instruments as primary enrichment
- All-in-one test device reduces time, cost and labor over traditional screening methods.

### Sensitivity:

- Detects down to <10 CFU *Listeria* spp.
- Sensitive to <10 CFU *L. mono*
- Internally validated against ISO method for 100% inclusivity / 95% exclusivity
- AOAC-RI *Performance Tested Method* SM validation

### Interpretation of Results:

| NATURAL LIGHT   |   |   | UV LIGHT  |   |
|---|---|---|---|---|
| NEGATIVE  | <i>LISTERIA</i> SPP.  | <i>LISTERIA</i> SPP.  | <i>LISTERIA</i> SPP.  | <i>L. MONO</i>  |
| —   | + spp.  | + spp.  | + spp.  | + spp.  |
|  |  |  |  |  |
| YELLOW  | GREY  | BLACK   | NO FLUORESCENCE   | GREEN FLUORESCENCE  |
|   | PRESUMPTIVE POSITIVE FOR <i>LISTERIA</i> SPP.                                       |   | NEGATIVE FOR <i>L. MONO</i>   | POSITIVE FOR <i>L. MONO</i>   |

Catalog No.

Description

Quantity

ILMG050

InSite *L. mono* Glo Environmental *Listeria* Species and *L. mono* Test

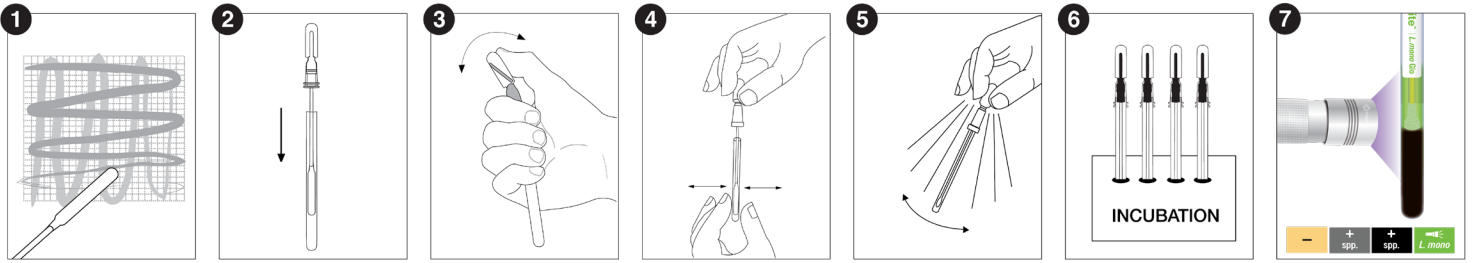
50



Find support documents, instructional videos, and more at [www.hygiena.com](http://www.hygiena.com)

**INSULAB**

## InSite *L. mono* Glo Procedure



See an instructional demo at [HygienaTV](#) or [HygienaTV](#)

### Related Products

#### InSite *Listeria*

For facilities who do not wish to screen for pathogenic *Listeria*, Hygiena offers InSite *Listeria* which is an easy-to-use, self-contained environmental *Listeria* species test. Each device contains a chromogenic liquid media with antibiotics, growth enhancers, and color-changing compounds specific to *Listeria*.



#### InSite *Salmonella*

InSite *Salmonella* is an environmental *Salmonella* species test that is self-contained, easy-to-use, and does not require expensive lab equipment. Each device contains a chromogenic liquid media with antibiotics, growth enhancers, and color-changing compounds specific to *Salmonella*.



#### Digital Dry Block Incubators

Designed specifically for Hygiena test devices, our digital dry block incubators are available in two different sizes and come in multiple configurations.



#### BAX® System X5 and Q7 Instruments

The BAX® System Instruments use advanced PCR technology to accurately and reliably identify foodborne pathogens in raw ingredients, finished products, and environmental samples. The automated DNA-based tests provide rapid results for 20 assays for pathogens like *Salmonella*, *Listeria*, and *E. coli*.



| Catalog No.   | Description   | Quantity |
|---------------|---|----------|
| IL050 / IL100 | InSite <i>Listeria</i> Environmental <i>Listeria</i> Species Test     | 50 / 100 |
| IS050         | InSite <i>Salmonella</i> Environmental <i>Salmonella</i> Species Test | 50       |
| INCUBATOR     | Small Format Digital Dry Block Incubator                              | 1        |
| INCUBATOR2    | Lab Format Digital Dry Block Incubator                                | 1        |
| See Catalog   | BAX® System X5 and Q7 Instruments                                     | 1        |



Find support documents, instructional videos, and more at [www.hygiena.com](http://www.hygiena.com)